

**SUBMISSION TO MINISTER OF AGRICULTURE, FORESTRY  
& FISHERIES**

**AGRICULTURAL DEVELOPMENT INITIATIVES IN CAPE  
AGULHAS MUNICIPALITY**



**31 MAY 2010**



# CAPE AGULHAS MUNICIPALITY: AGRICULTURE SECTOR DEVELOPMENT

## 1. Executive Summary

Cape Agulhas Municipality has already demonstrated its commitment to facilitate local economic development in its area of jurisdiction. Economic Development has been highlighted as a priority focus area in the Integrated Development Plan (IDP) of the Municipality. This commitment has also been confirmed at a strategic planning session of the Council and senior management of the Municipality during November 2009 where the strategic objective of “Financial viability through economic development” has been adopted.

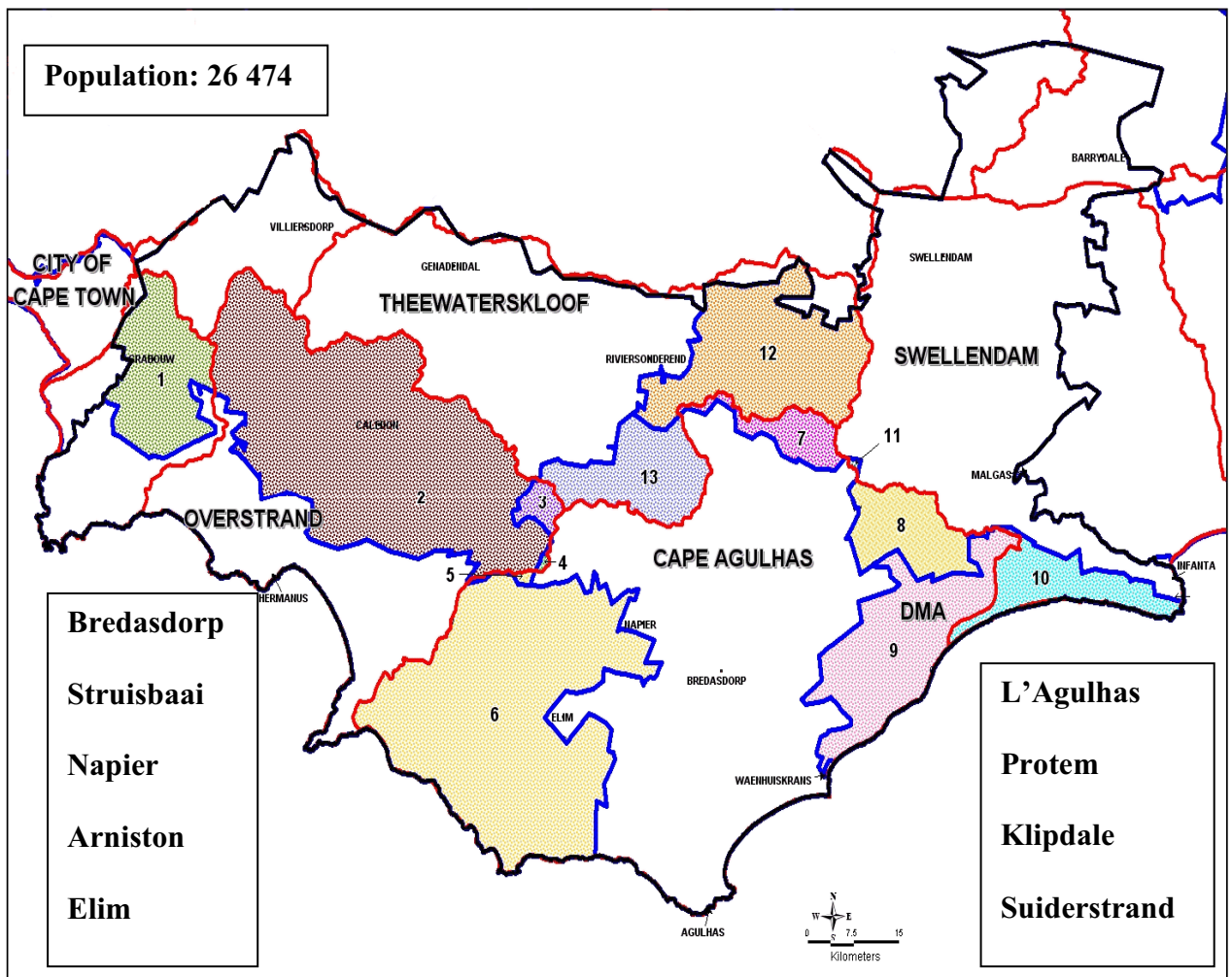
It is obvious that we need to identify the economic sectors that have the highest potential to grow the local economy and agriculture is certainly one of those sectors. Cape Agulhas Municipality in conjunction with strategic partners has already embarked on a number of innovative initiatives to ensure that more people gain access to the main stream agriculture industry of which some is being highlighted in this document. We are fortunate to have an enthusiastic willingness amongst established commercial farmers to form partnerships with emerging farmers and the Municipality to accelerate land reform and implement agricultural empowerment initiatives either on commonage or private land.

A visit by the national Minister of Agriculture, Forestry & Fisheries will give us an opportunity to showcase what has already been done but also highlight the challenges faced to stimulate the local economy through agriculture in order to give effect to the achievement of the Millennium Development Goals as well as the Strategic Development Agenda of Government.

## 2. About Cape Agulhas Municipality

Cape Agulhas Municipality is one of four local municipalities, which form part of the bigger Overberg District as per the Demarcation Act. The Cape Agulhas municipal area is the third biggest geographical area of the district and comprises a radius of approximately 2 411 km<sup>2</sup>. A distinct geographical feature of the Municipality is that is located at the southern-most tip of the Western Cape Province, South Africa and the African continent and it is also located at the point where the Indian and Atlantic oceans meet.

*Illustration 1: Map of Cape Agulhas Municipality in the context of Overberg district*



The following towns and settlements form part of the jurisdiction of Cape Agulhas Municipality:

- Bredasdorp
- Napier
- Struisbaai
- Waenhuiskrans/Arniston
- Elim
- L'Agulhas
- Klipdale
- Protem
- Suiderstrand

Bredasdorp is the main economic centre of the Municipality and is also the town where the main office of the Cape Agulhas Municipality is situated.

Cape Agulhas Municipality had a total population of 26 474 in 2006 which constitute 12,8% of the total population of the Overberg district. This actually confirms that Cape Agulhas is the smallest municipality in the district in terms of population size. Similar to other rural municipalities, Cape Agulhas also experiences common challenges such as skew patterns of wealth distribution, relatively high levels of unemployment and crime. The economy of Cape Agulhas Municipality grew at an average growth rate of 5.46 % between 2004 and 2005 but despite this relatively positive economic growth it is quite evident that not all sectors of society share in the benefit resulting from this. In fact it seems that the gap between rich and poor is actually widening. One of the objectives of this strategy is particularly aimed at increasing the participation of emerging entrepreneurs in the mainstream economy and to bring the first and second economy closer together.

### 3. Profile of towns

- **Bredasdorp:**

Bredasdorp is centrally located within the context of the municipal boundary in the southernmost region of the African continent at the intersection of the R316 (which runs between Caledon and Arniston) and the R319 (which runs between Agulhas/Stuisbaai and Swellendam. It is also the economic hub of the Cape Agulhas region and is home to the biggest concentration of urbanised population within the municipal boundary. Michiel van Breda, the first mayor of Cape Town, established Bredasdorp, South Africa's first "dorp", in 1838. Van Breda and another leading personality, Pieter Voltelyn van der Byl, could not agree where the church should be built. As a result, two churches were built, and two towns, Bredasdorp and Napier, were established in 1838 (Cape Agulhas Tourism Bureau, 2001). All essential services are available in Bredasdorp. The establishment of Denel's Missile Test Range and the SA Air Force's Test Flight and Development Centre (TFDC) in the mid-eighties near Waenhuiskrans/Arniston, and the movement of the Overberg District Municipality's Head Office to Bredasdorp, accelerated the development of the town.

The moderate Mediterranean climate and limestone soil is favourable for livestock farming; some of the best merino studs are found in this area. Wheat, barley, oats, canola and dry land lucerne are also cultivated. Many Strandveld farmers generate a substantial income from the export of wild flowers and provide employment to many people.



A number of historic sites have been identified in Bredasdorp: the Anglican Rectory and Hall, Renosterkop Farm, Mountain View (Kreupelhout Drive), and Springfield Farm and the Shipwreck Museum. The old white milkwood tree, situated on the Renosterfontein farm, is reputed to be between 600 and 1 000 years old, and is regarded as the largest identified example of the species. The Heuningberg Nature Reserve is situated south of Bredasdorp, which is home to more than 270 protected plant species. At least 6 species are found only on the Heuningberg range, e.g. the Bredasdorp Lily (*Cytanthus guthriei*) and the pincushion (*Leucospermum heterophyllum*).

- **Arniston / Waenhuiskrans:**

The fishing village of Arniston/Waenhuiskrans is situated near the southernmost tip of Africa, approximately 24 km southeast of Bredasdorp. Fishermen prior to 1820 occupied the bay in which Arniston/Waenhuiskrans is situated and they called it Kassiesbaai. The name of the village was derived from a British ship, the Arniston, which ran ashore in this bay in 1815. Waenhuiskrans refers to a large cavern that can only be reached during low tide. Older inhabitants claim that the cavern is big enough to have a wagon and a span of oxen turn in it.

Kassiesbaai, a well-known and attractively restored fishing village and a national monument in its entirety, is situated at Arniston/Waenhuiskrans.



The rugged coastline of the continental shelf dominates this unique fishing hamlet with its relatively closely-knit population.

Three archaeological areas of importance are found near Struispunt in the Waenhuiskrans Nature Reserve. There is a caravan park, a post office-restaurant and a number of seaside chalets that can be rented. The Arniston hotel, built in 1935, has been expanded, renovated and refurbished over the past 14 years. This is also one of the fishing villages suffering from the rationalisation of the fishing quotas resulting into increased unemployment, economic inactivity and subsequently lead to a number of other social challenges.

- **L'Agulhas and Suiderstrand :**

L'Agulhas is the southernmost town on the African continent. A cairn marks the official position of the southern most tip of Africa and it is at this longitudinal point that the Atlantic and Indian Oceans officially meet. The town of L'Agulhas developed around the famous lighthouse at Cape Agulhas, which is the country's second oldest lighthouse - dating back to 1848. The lighthouse is fully functional and houses the only lighthouse museum in Africa. It is not clear how L'Agulhas got its name: one theory holds that the early Portuguese seafarers gave it this name because at this point the needles in their compasses were unaffected by magnetic deviation and bore directly upon the true poles of the earth. Another theory is that it was named after the rocks that project from the surf offshore - like needles waiting to pierce the hull of any stray ship.

Suiderstrand is widely regarded as an extension of the town of L'Agulhas and is situated approximately 10km west from this panoramic coastal town. Suiderstrand mostly consist of a number of holiday homes along the beach and makes use of all public facilities and services of L'Agulhas. The town has developed fairly recently when high income earners settled in this tranquil seaside village to either retire or use it as a second home during leisure time. It consist of 324 erven of which 77% has been occupied up to the end of 2008

- **Struisbaai**

Struisbaai, only a few kilometres from L'Agulhas, is renowned for its pristine 14 km beach, which is the longest uninterrupted stretch of white sandy beach in the southern hemisphere. There is also some debate as to the origin of the name 'Struisbaai'. Some believe it means 'strawbay' referring to the fishermen's cottages that were originally built of straw. Others claim the name 'Struisbaai' is derived from the Dutch *vogelstruijs* or ostrich, which roamed the area. According to legend, Struisbaai is named for the size of its beach, which is an Old Dutch word for "huge".

Struisbaai is very popular for aquatic sports. Its convenient harbour facility offers boat owners the lure of deep-sea fishing.

The harbour was recently deepened and a new jetty constructed, replacing the original, which was built in 1859.

Major attractions include fishermen's cottages at Hotagterklip and the Limestone Church, which are all National



Monuments. The route to Struisbaai skirts around the Karsriviervlei and Soetendalsvlei, which is the largest natural body of fresh water in South Africa. Struisbaai was also crowned the town of the year in 2006. Struisbaai is the other town in Cape Agulhas which comprise of some kind of economic hub and is renowned as a sought after tourist destination.

- **Napier:**

Napier is situated 58 km from Caledon and 16 km from Bredasdorp off the N2 on Route 316. Napier originated because of differences between two well-known personalities, Mr Pieter van der Byl and Mr Michiel van Breda who could not agree on where a church should be situated in the district. Neither would give way and thus in 1838 two villages were established, Napier and Bredasdorp. Napier was named after the governor of the Cape at the time, Sir George Napier.

Agriculture is the predominant economic activity of the Napier area with grain farming dominating this industry; wheat, barley and canola are the primary crops cultivated. This region is one of the most important wool producing areas in the country and champion merino sheep, which provide wool as well as meat, are the predominant small livestock of the area. Dairy and beef cattle farming are also practiced on a large scale. The climate is also favourable for vegetable farming (e.g. sweet potatoes).

The wild flower export industry has grown vastly. In addition there are a number of small industries and a significant number of inhabitants work in the construction industry. Recently various artists have made Napier their home, and their work is for sale at



local businesses and at some studios. Napier is also a very popular place for retired people to live once they have retired. Major attractions include the Kakebeenwa

Monument (in memory of the Ossewa Trek) and the Dutch Reformed Church, which was declared a National Monument in 1978 as well as the only sundial in the province located at the municipal offices built by Danie du Toit in 1965.

- **Elim:**

The Elim mission station was founded in 1824 and is predominantly inhabited by members of the Moravian Church. On 12 May 1824 Bishop Hallbeck of the Moravian Church acquired the 2 570 ha farm Vogelfontein (bird fountain) from Johannes Schonken. On Ascension Thursday, 12 May 1825, the name was changed to Elim (which means *palm trees*). The mission station was established around the original farmhouse built in 1796 by a Huguenot named Louis du Toit.



The church became the pivot of the settlement and is the only monument to commemorate the freeing of the slaves in 1834. The entire town has been declared a national monument and has also

been identified as a historic site. The church has the oldest working clock in South Africa (more than 250 years old) and one of the most popular draw carts of Elim is its largest wooden waterwheel in South Africa.

Elim also features a slave monument dedicated to the emancipation of slaves on 1 December 1938. The Geelkop Nature Reserve near Elim is renowned for the rare dwarf Elim Fynbos and is home to more than 200 plant species, of which 13 are on the Red Data Species List.

The vegetation of Geelkop comprises mainly Elim Fynbos and Acid Sand Fynbos. Some wetland vegetation and Renosterveld remnants are also found in the area.

- **Klipdale and Protem:**

The construction of a railway line to the settlements of Klipdale and Protem and the grain elevator in the area contributed to the establishment and growth of these two settlements. With the completion of the railway line from Cape Town, via Sir Lowry's Pass, to Bredasdorp early in this century, a branch railway line was built from Klipdale (north of Napier) to a station called Protem. Protem or '*pro tempore*' means "for the time being or temporary" and it functioned as a railway halt. The extension of the railway line further into the Overberg was planned, but to date nothing has realised (Cape Agulhas IDP, 2002).



#### **4. Brief Economic Overview of Cape Agulhas Economy**

Cape Agulhas has a population of 26 484 (*Source: CAM IDP, 2009*) with an urban population of 83.2% and 16.8% residing in rural areas around the towns. This constitutes the smallest population of all the other municipalities in the Overberg District. The Cape Agulhas municipal area is the third biggest geographical area in the Overberg District. The 2004/2005 statistics indicate that Cape Agulhas is currently the third biggest contributor to the economic growth and GDP of the district at 14.2%. As is often the case, the economic activities are regarded to be the driving force behind this municipal area's growth.

The economic attributes and local resources are crucial to the economic opportunities and wealth that is offered by the area. Unfortunately there are also high levels of income inequalities, skewed patterns of ownership and abject poverty in Cape Agulhas. This situation highlights the lack of involvement of local inhabitants in the local economy.

The economy is well diversified with wholesale and retail trade, primary agriculture and agro-processing, fishing and aquaculture, and financial and business services making significant contributions to the local economy. The leading sectors in Cape Agulhas are agriculture and agro-processing, eco-tourism, fishing and mari-culture, financial and professional services and the construction industry.

Diversification of the agricultural sector has led to substantial improvement and growth in exports of wine products, olives, and cut flowers in Cape Agulhas. Overall, the tourism industry is taking a strong lead in the various sectors in Cape Agulhas. The preservation of the natural resources and conservation of sensitive areas plays a key role in eco-tourism and includes places like De Hoop Nature Reserve, the coastline, Agulhas Plains and various nature conservancies.

Mari-culture and the processing of marine products like abalone, mussels, and seaweed, has the potential to become a very lucrative industry for the area. This provides valuable natural resources which can be harvested and processed for commercial use and can be converted into a financially viable economic opportunity with multiple business ventures.

The relatively slow-paced Cape Agulhas economy still has a lot of potential for further expansion of the agro-processing sector, eco-tourism, and small-scale manufacturing businesses to contribute to the growth of bigger businesses and the leading sectors.

Unemployment is fortunately not highly dependent on seasonality compared to other regions in the Overberg and stays fairly stable through out the year and is estimated between 14-18%. According to the socio-economic survey that has been conducted randomly by Urban Econ in 2008, 15.8% of households in Cape Agulhas have no income and a significant 48% of households survive only on social grants from the Department of Social Development and SASSA.

Similar to most other rural towns there also exist a big gap between the rich and the poor in the Cape Agulhas region and this also contributes to a relatively limited skills resource in particular industries. This fact is also pertinent along racial lines with the white population earning approximately seven times more than the poorest household amongst the black population.

## **5. Sector Analysis of the Agricultural Industry**

Agriculture still employs the most people and is therefore the most important economic sector in the region even though its contribution towards the GDRP has decreased from 18% to 15.4% in 2005. Diversification of the agricultural sector has led to substantial improvement and growth in exports of wine, olives, and dried flowers in Cape Agulhas. This region is commonly renowned as a sowing-grazing zone where different crops of grain and livestock farming activities are being practised. In the latter years vegetable farming has also taken effect and some of the vegetable crops produced include potatoes,

pumpkin, cabbage, onions and squash. Farmers in the region have to distinguish if they wish to enter into cattle farming for meat processing purposes or dairy processing activities. The milk that is produced on dairy farms is mostly supplied in bulk to the processing plants of Nestle (Mosselbay, Robertson) and Parmalat (Bonnievale, Ladismith). Research conducted by Department of Agriculture suggests that dairy farming has shown a steady increase and has nearly doubled its output in the Cape Agulhas region in the last eight years. This was mostly as a result of highly profitable export prices and an increasing demand for value added dairy products on the market.

Another oilseed product that has a lot of potential for local farmers is canola which attract relatively high prices as a sought after commodity due to its high level of protein in cake form, usage as a vitality cooking oil as well as its medicinal value. Cape Agulhas region is also known as one of the leading wheat producing areas in South Africa, which also poses a particular challenge to the agricultural sector because of the high risks involved in wheat crops. Wheat is particularly vulnerable to severe weather conditions such as hailstorms and droughts as well as the volatility of the wheat prices on the international commodity markets. Even though the prices of wheat has declined steadily over the past years the input costs have remained high which obviously result in lower return on investment for farmers. Similarly to other regions the agriculture sector faces tough competition on the international export market, which is made more difficult to compete with other countries, which receive subsidies from their respective governments.

In 2006 it was estimated that 48.3% of all agricultural land were under cultivation of various agriculture products. The under mentioned table illustrates the values and percentage contributions of the important agriculture activities of the Cape Agulhas region in 2001.

*Table 3.1: Contributions of various agriculture activities in Cape Agulhas*

SECTOR	VALUE R million	PERCENTAGE
<b>Small stock</b>		
Wool	72.8	8.02
Mutton	52.7	5.80
<b>Large stock</b>		
Milk	347.6	35.27
Meat	52.9	5.82
<b>Small grain</b>		
Barley	133.0	14.64
Wheat	88.6	9.76
Oats	1.8	0.20
Canola	30.9	5.18
<b>Irrigation crops</b>		
	120.1	11.20
<b>Long-term crops</b>		
Vegetables	38.7	4.16
<b>Total</b>	<b>939.1</b>	<b>100</b>

(Source: Department of Agriculture Southern Cape Regional Development Plan)

Mixed farming activities (livestock and grain crops) dominated agriculture in Cape Agulhas and contributed 98% to total agricultural turnover in 2003. Some minor contributions were made by other sub-sectors such as agricultural services (1%); fruit, nuts and beverage crops (0.3%); forestry (0.3%) and animals (0.3%). The diversification of the agricultural sector is very evident in the Cape Agulhas regions. The numerous natural disasters and declining wheat markets resulted in a steady move to wine and olive farming by some farmers. The economies of areas like Bredasdorp, Napier and Elim are still primarily driven by the intensive grain farming and livestock practices.

The Bredasdorp area is known for its quality wool and mutton. Ostriches have been an integral part of the Bredasdorp region for the past decade. Single pairs are often stocked together with sheep to combat stock theft. The birds are also plucked on farms and processed at the Bredasdorp and Oudtshoorn abattoirs.

L'Agulhas is the most important production area in the Cape line-fish industry. However, the fish industry is experiencing problems with decreasing catches.

The controversial allocation of fishing quotas left fishermen on the Agulhas coast with limited line-fishing opportunities.

Emerging farming as an attempt to transform the mainstream agricultural industry is also very vibrant in the Cape Agulhas region although it is still in its infancy stage. Some challenges to accelerate the transformation process are the availability of suitable agricultural land with adequate water. A clear Land Reform Strategy for Cape Agulhas will have to be developed which will focus on improving the access to land for agricultural purposes at an affordable price. This will have to be done in conjunction with the relevant programmes of Dept of Land Affairs and Department of Agriculture. A stronger focus will also need to be adopted to develop the skills amongst our previously disadvantaged youth and women in effective agricultural practises. The Department of Land Affairs has recently embarked on a district wide process of Area Based Planning, which will pave the way to draft a comprehensive Land Reform Strategy in order to expedite the process of reaching the 30% national target for transferring of agricultural land to black farmers.

## **6. Agriculture Development Projects**

Although agriculture is the most important economic sector in the region it is also the sector where transformation has taken place at a snail's pace. The Municipality has identified a number of LED programmes and projects in the agriculture or agri-processing industry which will be utilised as catalysts to stimulate the economy and will enhance participation to the main stream economy for emerging farmers. This will also improve the challenging situation of food security in rural areas as well as create jobs for more local people. These projects include:

**Agri-dwala:** Agri-dwala is an agriculture empowerment company which consist of 29 black shareholders from Napier who hold 70% equity in the company together with two white commercial farmers, Kosie van Zyl and Piet Blom whom each own 15% of the business. This farming initiative started three years ago on commonage land which the group leased from Cape

Agulhas Municipality and mainly focus on grain and cattle farming. All of the shareholders have extensive experience in farming and Kosie van Zyl acts as the mentor for the group. They managed to do quite well in their endeavours and expanded from only utilising the commonage land around Napier and bought their own farm, Jafters Krantz as part of the LRAD programme. This project is regarded as one of the success stories of land reform and illustrates how established commercial and emerging farmers with the assistance of Government can work in tandem to ensure economic viability in the agricultural sector.

**Vierfontein Boerdery:** Two commercial farmers relocated from Free state



and bought a farm in the mountainous terrain of Napier in 2004. They managed with the help of local farm workers to establish a relatively successful farming unit which focus on fairly new types of commodities to this region namely figs, pomegranates and grapes.

They managed to secure a lucrative contract with Woolworths to supply them with packaged figs and the pomegranates and grapes are sold to other buyers.

As part of an empowerment initiative which will benefit the farm workers of Vierfontein Boerdery they want to secure 24 ha of commonage land from Cape Agulhas Municipality which is situated adjacent to the land of their farm and currently



leased to Agridwala to cultivate the same kind of fruit produce mainly for the export market. A workers trust had been formed which will own 50% of the new company to be established whilst Vierfontein Boerdery will own 20%, Agridwala 15% and the additional 15% by the employees of the new company. A scientific study conducted by Stellenbosch University in conjunction with Department of Agriculture indicated that the climate and soil types of the Cape Agulhas region bodes well for these types of produce. The new company would however require finance to start with the capital cost for this empowerment venture. The economic and skills development impact would be beneficial to the broader community of Napier because this is a more labour incentive farming activity than the conventional wheat and cattle farming in this region.

**Napier Skin Processing Plant:** This is an initiative that endeavours to add value to the lucrative sheep and cattle farming in the region. Cape Agulhas is one of the leading wool producing areas in the country and it is anticipated that this agri-processing initiative will add substantial value to this industry. It is commonly regarded that skin processing is a hazardous industry and normally results into air and water pollution. The feasibility studies for such a business venture is currently underway and if it proves to be economically viable can result into a high impact job creator. This will also provide an opportunity to forge an effective partnership with Agridwala to provide the sheep and cattle hides to be processed at the plant.

**Abalone & Kelp farming in Arniston:** It is quite evident that the diminishing marine resources and the limited allocation of fishing quotas are having a negative effect on the socio-economic fabric of the coastal communities in Arniston/Waenhuiskrans and Struisbaai. The municipality in conjunction with other government departments, private sector and community organisations are constantly searching for alternative economic opportunities to sustain the livelihoods of those communities. One of these initiatives include the establishment of financially viable aquaculture initiatives such as abalone and fresh fish farming as an alternative for the marine fishing industry.

An application has been received by Abagold in a partnership venture with St Markus Visserye who is a local empowerment group from Arniston to establish an abalone hatchery linked to kelp farming unit. The municipality has already catered for this initiative in its Spatial Development Framework. The Independent Development Corporation (IDC) has indicated that they are willing to fund this project if the land can be secured from Cape Agulhas Municipality.

**Healthgro Emerging Farming Project:** Health Gro is a community based agricultural project that was started in April 2008 by members of the local community in Nuwerus, Napier who secured approximately 4ha of commonage land in Napier commonly known as the “Uitspanningskamp” for a initial period of 5 years. They started with vegetable gardens in their backyards and now wish to expand to a community garden. Their business plan make provision for farming with broiler chickens, vegetable production, tunnel tomatoes and goats ( for producing milk and cheese ). Health Gro planned to create an environment and develop a businessplan where entrepreneurial small-scale farmers have the opportunity to nurture and sustain themselves and make a reasonable profit eventually out of the business.

This opportunity can have a significant economic impact in this community and could provide plus minus 15 permanent job opportunities as well as sustainable business enterprises. One of the major challenges is the

Environmental Impact Assessment that needs to be conducted as well as the availability of water for irrigation purposes.

**Piggery and abattoir facility:** Cape Agulhas Municipality with the assistance of Department of Agriculture has put up a piggery facility just outside of Bredasdorp for emerging farmers. The group consists of 15 pig farmers of whom 4 are women who has undergone extensive training with the Department and has grown their herd from 25 in 2004 to 240 currently. At this point in time they only grow the pigs and have to sell them to an abattoir facility in Cape Town at minimal prices because the abattoir in Bredasdorp is Halaal certified. They saw the value addition opportunity to establish their own abattoir facility which in itself will create more sustainable job opportunities and provide them access to the more lucrative fresh meat market. They are still conducting their feasibility study and will require funding to set up such an abattoir facility.

**Incubator on commonage land around Bredasdorp:** Pockets of commonage land is currently being leased by commercial farmers around Bredasdorp. The Council of Cape Agulhas Municipality has already indicated that they want to allocate this land to emerging farmers to accelerate transformation in the agriculture industry. A concept is currently suggested that an incubator type of farming be introduced where Department of Agriculture provide skills development and training to local emerging farmers and that Agri-Mega play a mentorship and marketing role as well as technical assistance in the farming production processes. The group also owns Agri-Mega Park which can be utilised to sell their produce at a fresh produce market place on a weekly basis. This concept can be regarded as a blueprint for future public/private/community partnerships in the agriculture sector.

**Communal Vegetable Gardens:** Cape Agulhas Municipality has made 4 ha of land available for subsistence vegetable farming to Sizabanthu Vegetable Co-operative which consists of 11 members from Swelitsha in Bredasdorp. The Department of Agriculture provides them with the necessary implements and training for this purpose which actually ensures food security to their

families. An emerging farmer in Elim produces the highest quality of tomatoes in a tunnel which he supplies to the local supermarkets. He indicated that an additional tunnel will actually double his output and certainly improve the profitability of an already successful business venture. He will however require funding for an additional tunnel to be erected.

### **Community Resource Centre in Arniston**

There are many plans and initiatives currently being run in Arniston/Waenhuiskrans. This long-term plan was set up by local people, and is being implemented and administered by the Waenhuiskrans/Arniston Community Development Trust (together with the Fishermen's Union, SAHRA, and the Municipality)

At the heart of the project lies the building and development of a resource centre /cultural interpretation centre/ tourist centre in Kassiesbaai. The building plans have been approved by the community, at various meetings, and also formally by different authorities. The resource centre building project is complemented by various other projects. At the moment, there is substantial skills training in basic business skills and tourism related projects, while students were awarded bursaries to study tourism at tertiary institutions. There is a programme for mentorship that will run for many years. It is an ambitious project to see that a fishing community finds new sustainable income.

The trust has raised money to build the planned centre and is ready to start building. It would be best, however, to have an integrated development plan for the harbour and the space surrounding it. The Trust and the community have a dilemma: they would like to start building right now, but know that for the best long-term plan the MCM and Cape Agulhas Municipality should be part of the process.

### **Business Hive in Arniston**

Arniston/Waenhuiskrans is a relatively small fishermen's village located in the municipal area of Cape Agulhas. Kassiesbaai which forms part of the town

was declared a National Monument and is of great significance and importance to the cultural heritage of this country. It's strategic location and the fact that it is already a tourist hub provides the opportunity for local entrepreneurs to become economically self reliant.

Especially with the diminishing fishing quotas it is becoming more urgent for the local people to explore other business venture to secure the livelihoods of their families. The only other major job provider is the Arniston Hotel which is in any event seasonal based. That is why the Council has made plots available for business purposes in Arniston. Especially to provide access to PDI's in Arniston to enter the main stream economy of the region. It is envisaged that an incubator type of business centre be established on the business sites identified.

### **Overberg Charcoal Manufacturing Plant**

The Department of Economic Development & Tourism in the Western Cape through it's Rural Economic Assistance Fund (REAF) has funded this initiative in partnership with a private company called S&P Carbon. A large portion of the Overberg and especially the Agulhas Plains are invested with alien vegetation particularly Black Wattle, Port Jackson and Rooikrans which obviously have a negative impact on the water sources of the region. Research has indicated that these types of wood species are actually perfectly suitable to convert into lump or briquette forms of charcoal which is in high demand amongst the South African braai community.



Currently the Fynbos Work for Water programme is in the process of eradicating the alien vegetation but only uses a limited amount of logged timber for firewood or other purposes and leaves most of it in the veld where it obviously becomes a fire hazard and detrimental to the rich fynbos kingdom in the area. A business man has spotted this opportunity to convert this wood into charcoal and entered into a partnership with CSIR and the Dept of Economic Development & Tourism to establish a financially viable charcoal manufacturing plant in Elim. The fundamental requirement for feasibility is that he has already established a long

term market with CADAC who will take up all the charcoal that will be produced at the plant and distribute it to all major retailers country wide under its brand name. The new company will also have a significant component of BBBEE which will be available to local entrepreneurs and empowerment groups.

A number of downstream business opportunities for emerging entrepreneurs also exist in the form of contractors which will harvest the wood and supply it to the charcoal company at a market related price. CADAC also indicated that they have a demand for firelighters which can be manufactured from the sawdust and residual charcoal powder which can also be taken up by a local entrepreneur. This is where the Dept of Agriculture, Forestry & Fishing can assist to provide the necessary implements and resources to these emerging

entrepreneurs to expand the value chain and broaden the base of economic empowerment.

### **Conclusion**

It is evident from this report that a number of agriculture activities are being endeavoured in Cape Agulhas in order to utilise our comparative advantage and stimulate the local economy to the benefit of the local agricultural practitioners. Effective partnerships between commercial farmers, emerging farmers and Government will enhance transformation in the agriculture industry to ensure that more people share in the benefits and the wealth of the land especially in the light of the new approach of profit sharing.